

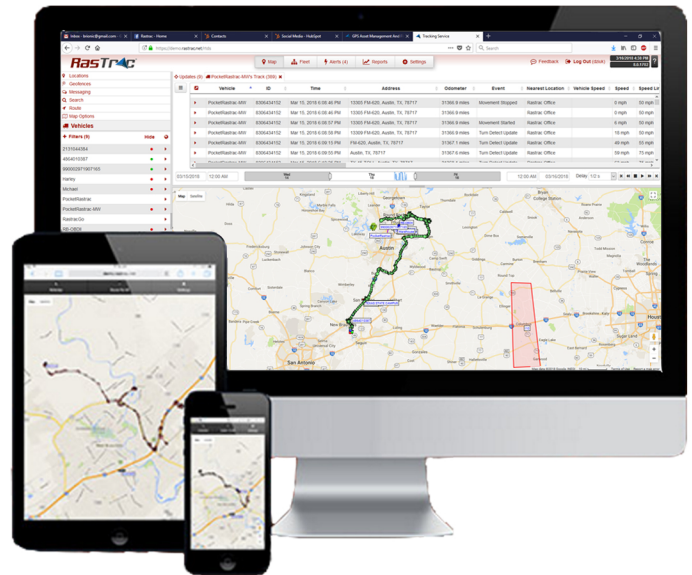


SX1

The SX1 represents a breakthrough in satellite-based asset monitoring and tracking technology. The SX1 provides GPS visibility, event monitoring and remote asset data on a near global basis. Ideal for low volume messaging with mission critical data, the SX1 provides commercial and government customers with the most cost-effective satellite solution available for both fixed and mobile applications such as intermodal shipping containers, trailers, buoys and barges.

Key Features

- Small compact profile
- Rugged design for extreme environments
- Exceeds IP68 and NEMA 6PT
- Multiple mounting options available
- Open data architecture for easy OEM integration
- Operates globally out of the box
- Satellite transmitter with dual-mode antenna
- Motion detector
- Multi-year battery
- USB HID interface
- Line power capable
- Magnet reed switch (on/off alarm)



Specifications	
Dimensions	8.25" x 3.25" x 1" (184 x 83 x 25mm)
Weight	13 ounces (369g)
Temperature	Testing per SAE J1455 4.1.3.1 and MIL 810F 4.5.2
Humidity	100% at 50 C, Salt, Fog Testing per MIL STD 810
Vibration and Shock	Testing per MIL STD 810, SAE J1455, and EIC 60521
Antenna	Internal Dual Mode (Satellite--GPS)
Battery	Internal, Ultrasonically Welded Lithium Pack - Primary 3200mAhr 6VDC
Battery Life	Up to 4000 messages

RasTrac®

www.rastrac.com

sales@rastrac.com

(877) 680-1188